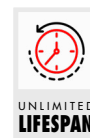


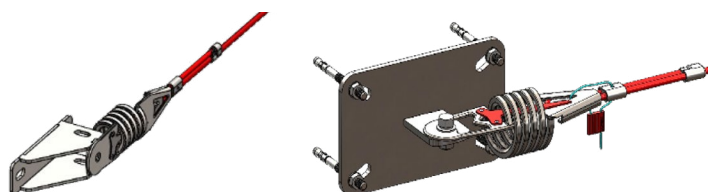
## IMPORTANT INFORMATION

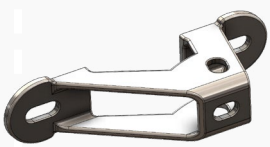

- Distance between pass-through support brackets: 15 m max.
- Periodic inspection at least once every 12 months



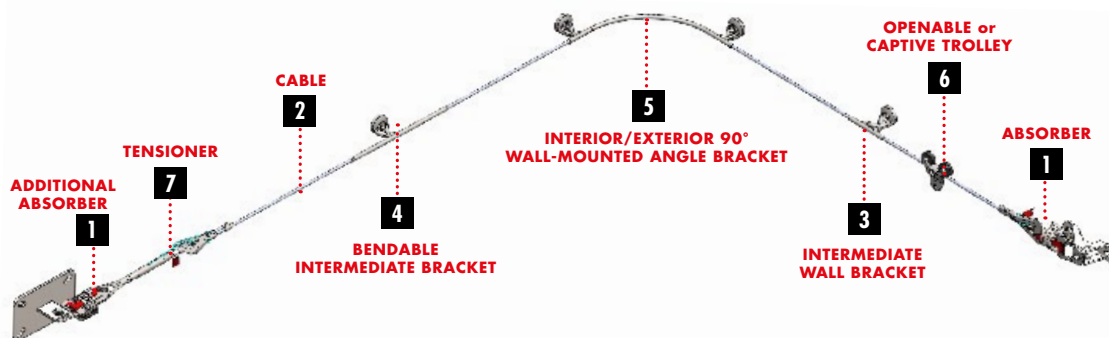
## PRODUCT ADVANTAGES

- Quick and easy to install
- Approved for 4 users simultaneously
- The components of the Lifeline have no sharp edges that could damage lanyards or ropes.



|                              |  | DIRECT FASTENING  | FASTENING ON DIABOLO   | FASTENING ON POST   |
|------------------------------|--|---|--|---|
| BASE PLATE<br>+<br>EXTENSION |  |  <p><b>END PLATE<br/>(2 fixings)</b><br/>Divalto Réf : A0014058<br/>Commercial Ref : S12</p> |  <p><b>END PLATE<br/>(4 fixings)</b><br/>Divalto Réf : A0014059<br/>Commercial Ref : S13</p> |   |
|                              |  | <p><b>THE LIFELINE IS DIRECTLY<br/>INSTALLED ONTO THE<br/>PLATES</b></p>  | <p><b>IT IS NOT POSSIBLE<br/>TO RAISE WITH THE<br/>DIABOLO</b></p>   | <p><b>IT IS NOT POSSIBLE TO<br/>RAISE WITH THE TILTING<br/>POST</b></p> |

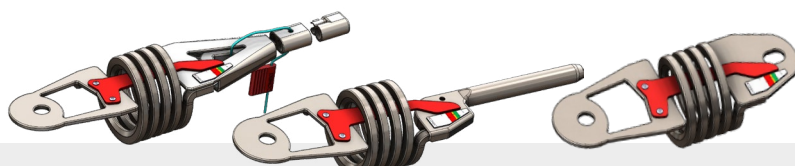
# COMPONENTS



- 1** **MANUALLY CRIMPED ABSORBER / MACHINE-CRIMPED ABSORBER / ADDITIONAL ABSORBER**  
Divalto Réf : A0014048 / A0014054 / A0014053  
Commercial Ref : S03 / S08 / S07

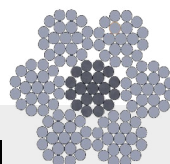
It consists of a Secur-Vit termination with a tension indicator, a finishing piece, and an integrated starting plate. Lead is provided to seal the termination. It allows tensioning the lifeline up to 100 daN. A scale indicates the tension in the cable.

The additional absorber allows positioning an absorber at both ends of the lifeline. A tension indicator is included to measure the tension. When combined with an S26 crimp clevis, this absorber enables the assembly of a CONEKT crimped lifeline.



- 2** **CABLE**  
Divalto Réf : A0003832  
Commercial Ref : S00

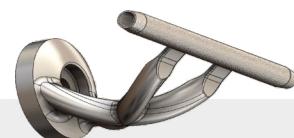
Flexible cable made of 7 strands of 19 wires in 316 stainless steel.



- 3** **INTERMEDIATE WALL BRACKET**  
Divalto Réf : A0014073  
Réf Commerciale OH05

The OH05 intermediate bracket allows smooth passage of the OH01 trolley.

In the event of a fall, its deformation reduces the forces on the supporting structure.



- 4** **BENDABLE INTERMEDIATE BRACKET**  
Divalto Réf : A0014076  
Commercial Ref : OH08

The OH08 intermediate bracket allows smooth passage of the OH01 trolley.

In the event of a fall, its deformation reduces the forces on the supporting structure. This bracket can be bent if needed. Whenever there is an angle on the lifeline, an absorber at each end is mandatory.



- 5** **INTERIOR/EXTERIOR 90° WALL-MOUNTED ANGLE BRACKET**  
Divalto Réf : A0014074 / Divalto Réf : A0014075  
Commercial Ref : OH06 / Commercial Ref : OH07

The OH06 intermediate bracket allows smooth passage of the OH01 trolley.

In the event of a fall, its deformation reduces the forces on the supporting structure. The bending of this bracket can be adjusted if needed. Whenever there is an angle on the lifeline, an absorber at each end is mandatory.



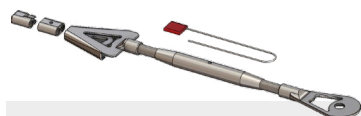
- 6** **OPENABLE TROLLEY**  
Divalto Réf : A0014071  
Commercial Ref : OH01

Openable trolley: The trolley locks in the closed position using a carabiner provided with it.



- 7** **MANUAL-CRIMPED TENSIONER**  
Divalto Réf : A0014050  
Commercial Ref : S04

It consists of a Secur-Vit termination, a finishing piece, and an integrated starting plate. A lead seal is provided with the tensioner to secure the termination and the tensioner.



- 7** **MACHINE-CRIMPED TENSIONER**  
Divalto Réf : A0014056  
Commercial Ref : S10

It is composed of a Ø 16 mm crimped termination. Five hexagonal crimps must be made to secure the cable.



- ACCESS SIGN**  
Divalto Réf : A0015025  
Commercial Ref : S20TRAD

The sign must be placed at the lifeline access point. It warns of a fall hazard and the requirement to wear a harness from this point onward.



- LIFELINE DATA PLATE**  
Divalto Réf : A0015024  
Commercial Ref : S21TRAD

It must be placed on the lifeline anchoring device. It serves as the lifeline's identification card.

Breaking strength of plates : 22kN.

Breaking strength of absorbers, tensioners, pass-throughs brackets and trolley : 15kN.

Downloadable data sheet on [www.echellecanada.ca](http://www.echellecanada.ca)