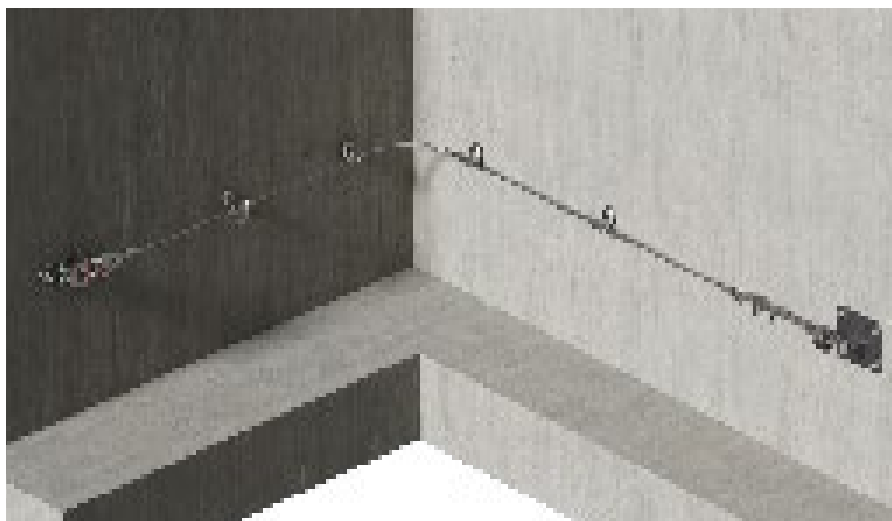


AUTOMATIC CABLE LIFELINE ON CONCRETE WALL



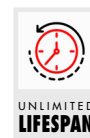
ÉCHELLE CANADA EXCLUSIVITY

COMPLIANT WITH STANDARD EN 795 : 2012 and ACCORDING TO
CSA Z259.16-15 SPECIFICATIONS. *Design of active fall protection systems.*



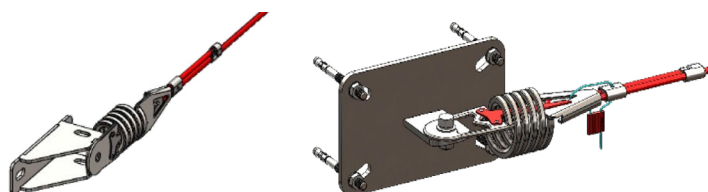
IMPORTANT INFORMATIONS

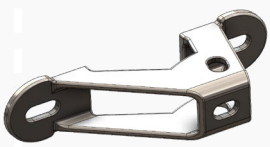
- Distance between pass-through support brackets: 15 m max.
- Periodic inspection at least once every 12 months



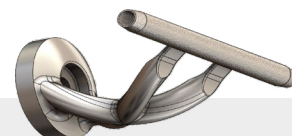
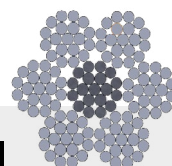
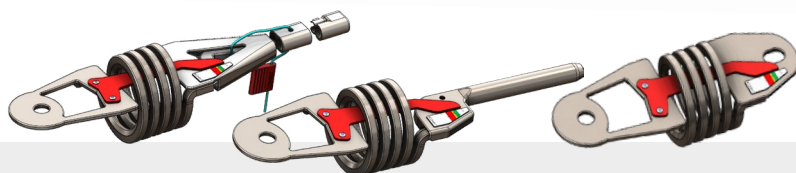
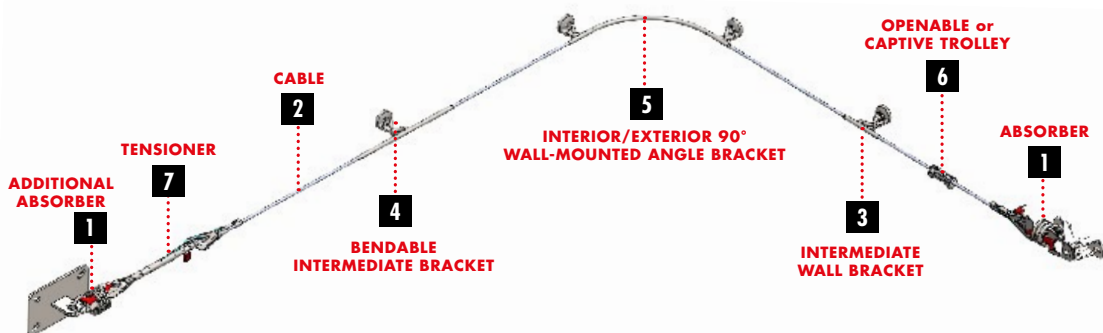
PRODUCT ADVANTAGES

- Quick and easy to install
- Approved for 4 users simultaneously
- The components of the Lifeline have no sharp edges that could damage lanyards or ropes.



		DIRECT FASTENING	FASTENING ON DIABOLO	FASTENING ON POST
BASE PLATE + EXTENSION		 <p>END PLATE (2 fixings) Divalto Réf : A0014058 Commercial Ref : S12</p>	 <p>END PLATE (4 fixings) Divalto Réf : A0014059 Commercial Ref : S13</p>	
		<p>THE LIFELINE IS DIRECTLY INSTALLED ONTO THE PLATES</p>	<p>IT IS NOT POSSIBLE TO RAISE WITH THE DIABOLO</p>	<p>IT IS NOT POSSIBLE TO RAISE WITH THE TILTING POST</p>

COMPONENTS



1 **MANUALLY CRIMPED ABSORBER / MACHINE-CRIMPED ABSORBER / ADDITIONAL ABSORBER**
Divalto Réf : A0014048 / A0014054 / A0014053
Commercial Ref : S03 / S08 / S07

It consists of a Secur-Vit termination with a tension indicator, a finishing piece, and an integrated starting plate. Lead is provided to seal the termination. It allows tensioning the lifeline up to 100 daN. A scale indicates the tension in the cable.

The additional absorber allows positioning an absorber at both ends of the lifeline. A tension indicator is included to measure the tension. When combined with an S26 crimp clevis, this absorber enables the assembly of a CONEKT crimped lifeline.

2 **CABLE**
Divalto Réf : A0003832
Commercial Ref : S00

Flexible cable made of 7 strands of 19 wires in 316 stainless steel.

3 **INTERMEDIATE WALL BRACKET**
Divalto Réf : A0014073
Réf Commerciale OH05

The OH05 intermediate bracket allows smooth passage of the A01 and A02 trolleys.

In the event of a fall, its deformation reduces the forces on the supporting structure.



4 **BENDABLE INTERMEDIATE BRACKET**
Divalto Réf : A0014076
Commercial Ref : OH08

The OH08 intermediate bracket allows smooth passage of the A01 and A02 trolleys.

In the event of a fall, its deformation reduces the forces on the supporting structure. This bracket can be bent if needed. Whenever there is an angle on the lifeline, an absorber at each end is mandatory.



5 **INTERIOR/EXTERIOR 90° WALL-MOUNTED ANGLE BRACKET**
Divalto Réf : A0014074 / Divalto Réf : A0014075
Commercial Ref : OH06 / Commercial Ref : OH07

The OH06 intermediate bracket allows smooth passage of the A01 and A02 trolleys.

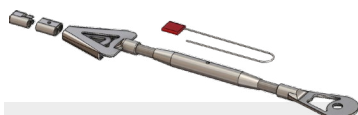
In the event of a fall, its deformation reduces the forces on the supporting structure. The bending of this bracket can be adjusted if needed. Whenever there is an angle on the lifeline, an absorber at each end is mandatory.



6 **OPENABLE or CAPTIVE TROLLEY**
Divalto Réf : A0014065 / Divalto Réf : A0014066
Commercial Ref : A01 / Commercial Ref : A02

Openable trolley: The trolley locks in the closed position using a carabiner provided with the trolley.

Captive trolley: It cannot be removed from the lifeline without disassembling the cable.



7 **MANUAL-CRIMPED TENSIONER**
Divalto Réf : A0014050
Commercial Ref : S04

It consists of a Secur-Vit termination, a finishing piece, and an integrated starting plate. A lead seal is provided with the tensioner to secure the termination and the tensioner.



7 **MACHINE-CRIMPED TENSIONER**
Divalto Réf : A0014056
Commercial Ref : S10

It is composed of a Ø 16 mm crimped termination. Five hexagonal crimps must be made to secure the cable.



ACCESS SIGN
Divalto Réf : A0015025
Commercial Ref : S20TRAD

The sign must be placed at the lifeline access point. It warns of a fall hazard and the requirement to wear a harness from this point onward.



LIFELINE DATA PLATE
Divalto Réf : A0015024
Commercial Ref : S21TRAD

It must be placed on the lifeline anchoring device. It serves as the lifeline's identification card.

Breaking strength of plates : 22kN.

Breaking strength of absorbers, tensioners, pass-throughs brackets and trolley : 15kN.

Downloadable data sheet on www.echellecanada.ca