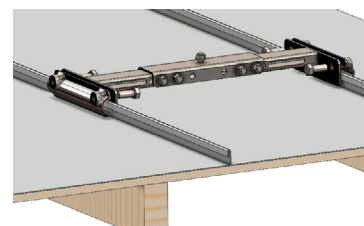
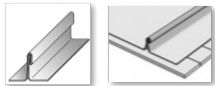
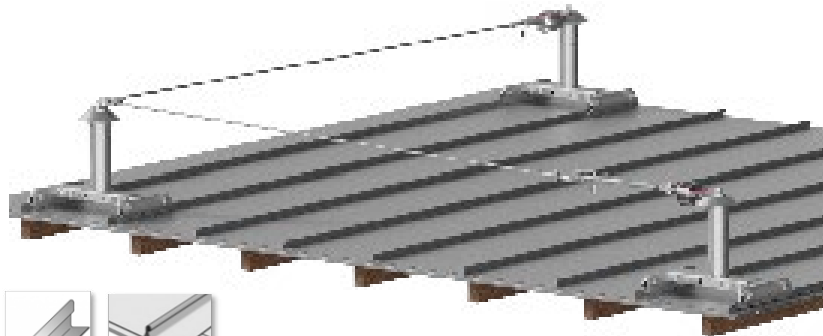


MANUAL CABLE LIFELINE ON STANDING SEAM



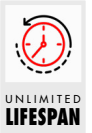
ÉCHELLE CANADA EXCLUSIVITY

COMPLIANT WITH STANDARD EN 795 : 2012 and ACCORDING TO
CSA Z259.16-15 SPECIFICATIONS. *Design of active fall protection systems.*



IMPORTANT INFORMATION

- Horizontal lifeline for standing seam zinc roofs
- Zinc ≥ 1 mm / Steel ≥ 0.63 mm / Aluminum ≥ 0.9 mm
- Distance between pass-through support brackets: 10-12 m max.
- Periodic inspection at least once every 12 months

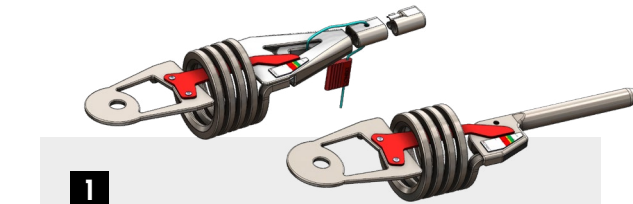
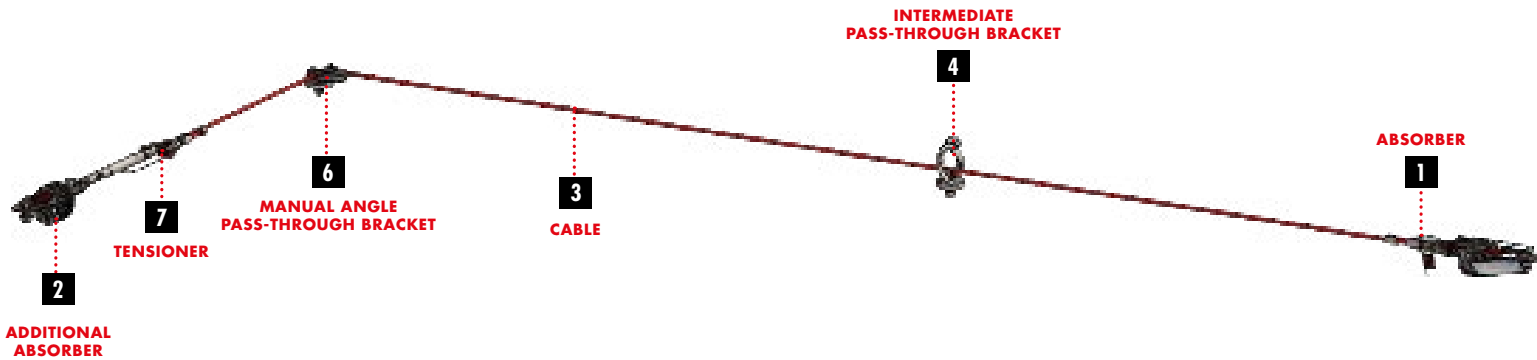


PRODUCT ADVANTAGES

- Quick and easy to install
- Approved for 4 users simultaneously
- The components of the Lifeline have no sharp edges that could damage lanyards or ropes.

	DIRECT FASTENING	FASTENING ON DIABOLO	FASTENING ON POST
INTERFACE	<p>ICJD S 290mm 430mm</p>	<p>ICJD L 460mm 600mm</p>	<p>SHORT INTERFACE FOR STANDING SEAM 290 to 430 mm Divalto Réf : A0014294 Commercial Ref : ICJD S</p> <p>WIDE INTERFACE FOR STANDING SEAM 460 to 600 mm Divalto Réf : A0014105 Commercial Ref : ICJD L</p>
EXTENSION	<p>IT IS NOT POSSIBLE TO FIX THE RAIL FASTENER DIRECTLY ONTO THE INTERFACE</p>	<p>DIABOLO ADAPTER Divalto Réf : A0015587 Commercial Ref : AD</p>	<p>TILTING POST Divalto Réf : A0014093 Commercial Ref : PB250</p>

COMPONENTS

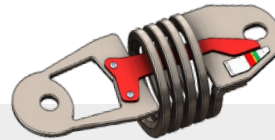


1

MANUALLY CRIMPED ABSORBER / MACHINE-CRIMPED ABSORBER

Divalto Réf : A0014048 / A0014054
Commercial Ref : S03 / S08

It consists of a Secur-Vit termination with a tension indicator, a finishing piece, and an integrated starting plate. Lead is provided to seal the termination. It allows tensioning the lifeline up to 100 daN. A scale indicates the tension in the cable.

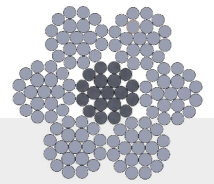


2

ADDITIONAL ABSORBER

Divalto Réf : A0014053
Commercial Ref : S07

The additional absorber allows positioning an absorber at both ends of the lifeline. A tension indicator is included to measure the tension. When combined with an S26 crimping clevis, this absorber enables the assembly of a CONEKT crimped lifeline.



3

CABLE

Divalto Réf : A0003832
Commercial Ref : S00

Flexible cable made of 7 strands of 19 wires in 316 stainless steel.



4

INTERMEDIATE PASS-THROUGH BRACKET

Divalto Réf : A0014051
Commercial Ref : S05

It is equipped with a hook to make it compatible with PB250 posts. An angle of 5° is allowed at the entry and exit of the intermediate brackets..

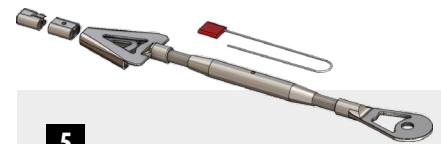


5

MANUAL ANGLE PASS-THROUGH BRACKET

Divalto Réf : A0014052
Commercial Ref : S06

Whenever there is an angle on the lifeline, an absorber at each end is mandatory. A minimum angle of 90° is required on rigid supports with a single angle bracket. On PB250 posts, a minimum interior angle of 120° is required with two mandatory angle brackets.

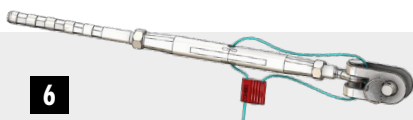


5

MANUAL-CRIMPED TENSIONER

Divalto Réf : A0014050
Commercial Ref : S04

It consists of a Secur-Vit termination, a finishing piece, and an integrated starting plate. A lead seal is provided with the tensioner to secure the termination and the tensioner.



6

MACHINE-CRIMPED TENSIONER

Divalto Réf : A0014056
Commercial Ref : S10

It is composed of a Ø 16 mm crimped termination. Five hexagonal crimps must be made to secure the cable.



ACCESS SIGN

Réf Divalto : A0015025
Commercial Ref : S20TRAD

The sign must be placed at the lifeline access point. It warns of a fall hazard and the requirement to wear a harness from this point onward.



LIFELINE DATA PLATE

Réf Divalto : A0015024
Commercial Ref : S21TRAD

It must be placed on the lifeline anchoring device. It serves as the lifeline's identification card.

Breaking strength of plates : 22kN.

Breaking strength of absorbers, tensioners, pass-throughs brackets and trolley : 15kN.

Downloadable data sheet on www.echellecanada.ca