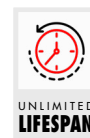


IMPORTANT INFORMATION

- For use on ceiling systems with standard or XL rail
- Distance between fasteners :
 - with standard rail : 4 m max, and 2.5 m if suspended
 - with XL rail : 6 m, and 5 m if suspended
- Periodic inspection at least once every 12 months

PRODUCT ADVANTAGES

- Easy and quick to install
- Simultaneous use for up to 4 users
- Rigid lifeline in anodized aluminum
- Rails and lifeline components are free from sharp edges that might damage ropes
- No rule for spacing between fastening and splice



INTERFACE

+

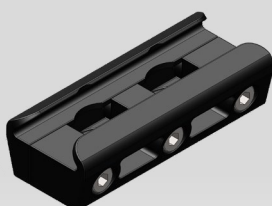
EXTENSION

+

FASTENING

DIRECT FASTENING WITHOUT INTERFACE

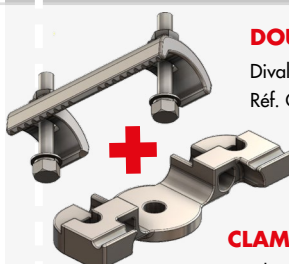
IT IS POSSIBLE TO FIX THE RAIL FASTENER DIRECTLY ONTO THE FRAME



WIDE RAIL FASTENER

Divalto Réf : A0014134
Commercial Ref : R25XL

DIRECT FIXING ON CLAMPING SYSTEM



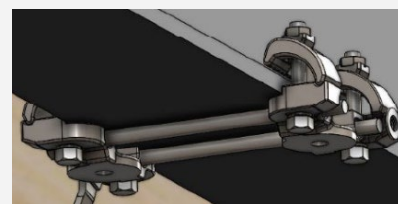
DOUBLE CLAMP

Divalto Réf : A0014108
Réf. Commerciale CRA

CLAMPING SUPPORT

Divalto Réf : A0014110
Commercial Ref : SC

FIXING ON CLAMPING SYSTEM WITH ELEVATION



The double clamp and the clamping support are sold individually. Remember to order a pair. The threaded rods are included with the clamping system in the configurator.



DIABLO ADAPTER

Divalto Réf : A0015587
Commercial Ref : AD

AND / OR

ARTICULATION Ø 60MM

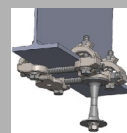
Divalto Réf : A0014107
Commercial Ref : AR



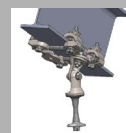
POSSIBLE CONFIGURATIONS



2 double clamps
+ 2 clamping support
+ 2 threaded rods included
+ 1 articulation (x2 at the ends)



2 double clamps
+ 2 clamping support
+ 2 threaded rods included
+ 1 diablo (x2 at the ends)



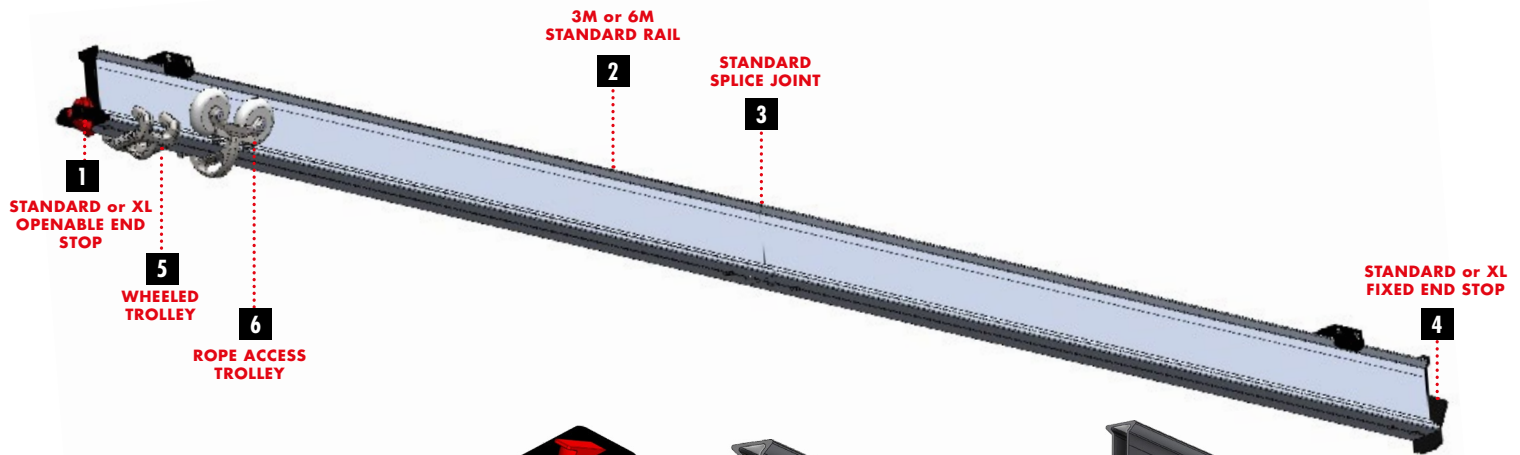
2 double clamps
+ 2 clamping support
+ 2 threaded rods included
+ 1 articulation (x2 at the ends)
+ 1 diablo (x2 at the ends)



SHORT RAIL FASTENER

Divalto Réf : A0014133
Commercial Ref : R25

1 short fastener on intermediate interfaces
2 short fasteners at the ends



1

STANDARD / XL OPENABLE END STOP

Divalto Réf : A0014131 / A0014813

Commercial Ref : R22 / R22XL

304 stainless steel end stop to halt the trolley movement at the end of the lifeline. This removable end stop allows easy insertion and removal of the trolleys.

2

RAIL STANDARD / RAIL XL 3M OU 6M

Divalto Réf : A0014119 / A0014120 (3m) - Divalto Réf : A0014121 / A0014122 (6m)

Commercial Ref : R03 / R03XL (3m) - Commercial Ref : R06 / R06XL (6m)

The closed I-beam profile provides high rigidity in bending and torsion. Its rounded shape under the main flange optimizes wheel movement at a 40° angle. It allows clearance from rail fixings. The rail connects to splices, end stops, and angle components with 2 FHC M8 screws made of 316 stainless steel.

3

STANDARD / XL SPLICE

Divalto Réf : A0014127 / A0014128

Commercial Ref : R20 / R20XL

Joint splice for connecting two standard or XL CONEKT rails.

4

STANDARD / XL FIXED END STOP

Divalto Réf : A0014129 / A0014130

Commercial Ref : R21 / R21 XL

304 stainless steel end stop. Allows halting the movement of trolleys at the end of the lifeline.

5

TROLLEY WITH WHEELS

Réf Divalto : A0014139

Commercial Ref : R52

304-grade stainless steel trolley for use on ground, wall, or ceiling systems. Its 12 D15 rollers provide excellent glide along the lifeline and make it compatible with all types of self-retracting fall arresters (up to 10 kg).

6

ROPE ACCESS TROLLEY

Réf Divalto : A0014140

Commercial Ref : R53

304 stainless steel trolley with 4 D15mm rollers and 4 D76mm polyurethane wheels with ball bearings. This trolley can only be used in a ceiling position. It offers excellent glide and can be used with any type of self-retracting lifeline, making it suitable for suspension work.

**ACCESS SIGN**

Réf Divalto : A0015025

Commercial Ref : S20TRAD

The sign must be placed at the lifeline access point. It warns of a fall hazard and the requirement to wear a harness from this point onward.

**LIFELINE DATA PLATE**

Réf Divalto : A0015024

Commercial Ref : S21TRAD

It must be placed on the lifeline anchoring device. It serves as the lifeline's identification card.

Breaking strength of plates : 22kN.

Breaking strength of absorbers, tensioners, pass-throughs brackets and trolley : 15kN.

Downloadable data sheet on www.echellecanada.ca